



CERGAS PROSES SDN BHD

FLOW

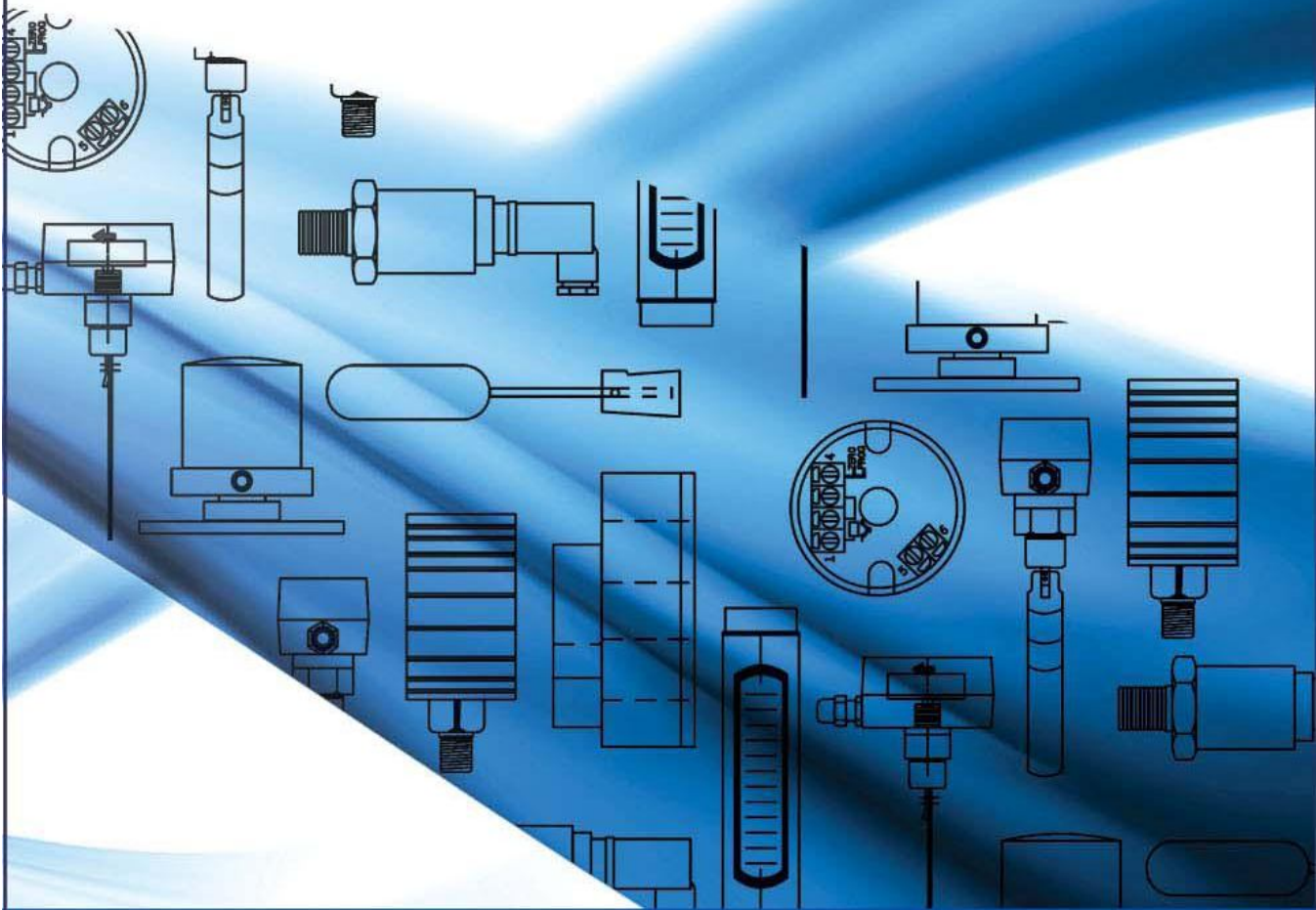
LEVEL

TEMPERATURE

PRESSURE

SYSTEM

VALVE



**Cergas Proses is the people at Cergas Proses.
Entrusted with responsibility, they make all the difference.**

We are soles distributor for :

 **M-SYSTEM**

 **GEMU®**

 **INOX-TEK IND. CO., LTD.**

 **InterApp**

 **macnaught**

 **Baumer**

 **HACH®**

 **SEOJIN**

 **ISOIL
INDUSTRIA**

 **GLI
International
A Hach Company Int'l**

 **NOHKEN**

 **ELODRIVE**

 **tecsis**

 **V-TORK®**

 **NEW-FLOW**

 **NAF**

 **SHANGHAI KENT**

 **YSMETER**

Main Office

CERGAS PROSES SDN BHD (Co. No: 673150 - X)

No.9, Jalan Sena 11, Taman Rinting,

81750 Masai, Johor.

Tel : +607 295 1072 / 388 7631

Fax : +607 3878 226

Email : lieuw@cergasgroup.com / sales@cergasgroup.com / cpsb@gmail.com

Valve Division

VALVEPRO SDN BHD (Co. No: 928542 - X)

No .9-01, Jalan Sena 11, Taman Rinting,

81750 Masai, Johor.

Tel : +607 295 1072 / 388 7631

Fax : +607 3878 226

Email : vpsb@gmail.com

www.cergasgroup.com



PRESSURE & LEVEL TRANSMITTER

Technical Data

Measuring range :

Differential : 0~0.16 kPa to 0~10MPa

Absolute : max. 0~25 MPa, min 0~20 KPa

Relative : max 0~40 MPa, min 0~0.16 KPa

Fluid : Liquid, gas and steam

Temperature : -40°C~100°C

Drift (zero) 0.5%FS/50°C

Drift(span) 0.7% FS/50°C

Accuracy : 0.075 grade, 0.2 grade, 0.5 grade

Approvals : ExdIIIBT5 or ExdIICT6

Output Signal : 4mA~20mA DC two wire

Mounting : Flange type upon request

Model : Recommended ALDPT 3051 series

Approval : ATEX EEX ia IIC T4 or EEXD



SEPARATED VIBRATION LEVEL SENSOR

Technical Data

Mounting Standard : R1, JISK50A, R1-1/4, JIS5K50A, JIS5K50A

Mounting Option : from 3/4", from 25A, from 1-1/4", from 32A, from 50A

Operating Temperature Housing : -20°C to 80°C (Get rid of dew)

Operating Temperature Vibration Rod : -20°C to 150°C (180°C option),
-20°C to 70°C

Maximum Pressure : 2MPa / 20bar, 1 kPa / 0.01 bar

Maximum Humidity : 95% RH

Sensitivity : Bulk density of 0.2g/cm³ Min.

Vibration Frequency : Approx. 300 to 500 Hz

Material Housing : ADC12

Material Vibration Rod : 304SS

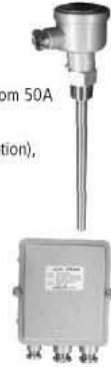
Material Extension : 304SS, PVC

Cable Entry : JIS F 15a (G 1/2)

Protection : IP65

Model : Recommended VLS12, 22, 32

Approval : ATEX, EEX ia or EEXD



ROTATING PADDLE SENSOR

Technical Data

Mounting : G3/4

Supply Power : 24, 100, 110, 120, 200, 220, 240V AC 50/60Hz

Power Consumption : Approx. 1.5VA Max.

Contact Rating : 1 SPDT, 250V 3A AC / 30V 4A DC (Resistive),

C-No : Normally Open Contact

C-No : Normally Close Contact

Operating Temperature Housing : -10°C to 45°C

Operating Temperature detection part : -10°C to 70°C

Maximum Pressure in Container : 30kPa / 0.3 bar

Maximum Humidity : 85% RH

Material Housing : ADC12 and ABS

Material Mounting Part : Brass (galvanized)

Material Spindle : 304 SS

Material Paddle : PC or 304SS

Electrical Connection : JIS F 15c (G1/2)

Housing Protection : IP 65

Motor Rotation : 1rpm (50Hz) or 1.2rpm (60Hz)

Life Expectancy : 1 X 10⁵ Operations (Micro switch)

Model : Recommended R7



MICROWAVE LEVEL SENSOR

Technical Data

Mounting : G1

Supply Power : 100 or 200V AC ±10%, 50/60Hz

Power Consumption : Approx. 2VA Max.

Control Output : 1 SPDT, 250V 3A AC (Resistive), 4-5 : Normally Open Contact,

5-6 : Normally Closed Contact

Detection Time Delay : Adjustable between 0.1 to 10 seconds

Operating Temperature : -10°C to 55°C

Maximum Pressure : 500kPa / 5bar

Frequency : Approx. 24.2 GHz

Material Housing : ADC12

Material Face : PTFE

Cable Entry : G3/4

Protection : IP65 equivalent

Separation range : L: 6m or H: 60m, selected by switch

Indication : Green LED for Power status, Red LED for detection status,

Green LED for receiving microwave

Model : Recommended MWS



OPTICAL INTERFACE SENSOR

Technical Data

Mounting : JIS5K65A

Supply Power : 100/200V AC 50/60Hz

power Consumption : Approx. 2.5VA Max.

Relay Output : 1 SPDT, 250V 3A AC, 30V 3A DC (resistive),

C-A : Normally Open Contact, C-B : Normally Close Contact

Detection Time Delay : Adjustable between 0.5 to 10 seconds

Operating Temperature Housing : -10°C to 55°C

Operating Temperature Wetted Parts : -10°C to 70°C, -10°C to 50°C

Maximum Pressure : 100kPa / 1 bar

Material Housing : AC / ADC 12

Material Seal Pipe : FEP

Material Cable : PVC

Cable Entry : G1/2, G3/4

Protection : IP54, IP68

Fail Safe : High or Low by switch

Model : Recommended OX



MINIATURE LIQUID LEVEL SENSOR

Technical Data

Material Stem : Polyacetal, PP, PVDF, 316SS

Material Float : BUNA, Expanded PP, PVDF, 316LSS

Material retainer : 316SS, PP, PVDF, 316LSS

Operating Temperature: -10°C to 90°C, -10°C to 100°C

Maximum Pressure : 1 MPa / 10bar, 2MPa / 20bar

Mounting Type : Vertical

Switching Rating : 50VA

Lead Wires : #22AWG, 300mm

Minimum SG : 0.6, 0.85, 0.9, 0.8

Model : Recommended OL, LS, SH, FH





LEVEL

MAGNETIC FLOAT LEVEL SWITCH

Technical Data

Material : Wetted parts are available for

SS304, SS316, PVC, PP, PVDF by requested.

Multiple level point are available by requested for customer.

Enclosure Housing : IP65 and IP67, Explosion proof, weather proof

Straight style LS Series : LS-simple type, WLS-IP65 & weather proof,
ELS-Explosion proof

Angle Style Series : LA- simple type, WLA-IP65 & weather proof,
ELA-explosion proof

Connection Size : Thread Type- 1 1/2" to 3", Flange Type- 1 1/2" to 4"

Model : Recommended LS Series



MAGNETIC FLOAT LEVEL TRANSMITTER

Technical Data

Resolution Accuracy : ±12mm standard; ±6mm on request

Material : Wetted parts are available for SS304, SS316, PVC, PP, PVDF
Others on request

Connection Size : 1" to 3" NPT/BSP for threaded, 1" to 4" for flange type

Output Single : 4~20mA DC (500~20 k) 2-wire

Power Supply : 11V~30V DC

Enclosure Housing : IP65, Explosion proof available

Max. Range : 6000mm (SS316, SS304, PVC, PP, PVDF)

Limit Operating Temperature : -40~+100°C

Limit Operating Pressure : 0~15 kg/cm²

Model : Recommended LT Series



MAGNETIC LEVEL GAUGE

Technical Data

Application for chemical and petrol chemical process, boilers and other industries.

Connection : From 1/2" to 3" flange type, JIS, ANSI, DIN rating available, special size on request

Pressure Limited : 10 kg/cm² for plastic material type (P.V.C, P.P, PVDF)
20kg/cm² for standard type
up to 40 kg/cm² on request

Temperature Limited : 0~50°C for plastic chamber type
-40~150°C for standard type
-40~400°C for special type

Center to Center Length : Maximum 5500mm

Accuracy : ±4mm (Transmitter: ±12mm standard; ±6mm on request)

Indicating Strips : Aluminium, Plastic (PBT) available, their colors are red and white

Specific gravity : 500~2900 kg/m³

Indicating gauge orientation adjustable

Chamber size : Ø50 or Ø60

Model : Recommended M-Series



HORIZONTAL MAGNETIC LEVEL SWITCH

Technical Data

Enclosure Housing : Weather proof IP65

Process Connection : 1 1/2"~3" NPT/BSP threaded

Flange Mounting : JIS, ANSI, DIN STD, DN 40 - DN 100

Material : Wetted parts and housing are in 316 stainless steel

Temperature Limits : -30°C to 150°C

Switch Function : 3.0 MPa (30 kg/cm²), option : up to 4.5 MPa

Switch Rating : SPDT Micro Switch

Conduit Connection : 1/2" NPT female, option

Float Working Specific Gravity : ≥ 0.7 (option : less than 0.7 available on request)

Model : Recommended LT201 Thread Type



HORIZONTAL MAGNETIC LEVEL SWITCH EXPLOSION PROOF

Technical Data

Enclosure Housing : EXPLOSION PROOF-EEx d II C T6, IP65

Process Connection : 1 1/2"~3" NPT/BSP threaded

Flange Mounting : JIS, ANSI, DIN STD, DN 40 - DN 100

Material : Wetted parts 316 stainless steel

Pressure Limits : 3.0MPa (30 kg/cm²), option : up to 4.5 MPa

Float Working Specific Gravity : ≥ 0.7 (option : less than 0.7 available on request)

Maximum Temperature : -30°C~+150°C, Maximum 450°C upon request

Switch Function : SPDT Micro switch

Switch Rating : 3A/250VAC, 3A/30VDC, 0.4A/125VDC

Conduit Connection : 1/2" NPT, 3/4" NPT female, option available

Model : Recommended LXT201, LXT204



HORIZONTAL MAGNETIC LEVEL SWITCH

Technical Data

Enclosure Housing : Explosion proof-EEx d II C T6, IP65

Process Connection : 1 1/2" - 4" Flange Type

Flange Rating : JIS, ANSI, DIN available

Material : Wetted parts 316 stainless steel

Pressure Limits : 3.0MPa (30 kg/cm²) for Ø40 float, option : up to 4.5 MPa
2.0 MPa (20 kg/cm²) for Ø50 float

Float Working Specific Gravity : > 0.7 (option : less than 0.7 available on request)

Limited Temperature : -30°C~+150°C (-30°C~+350°C for LTH & LXTH only)

Switch Function : SPDT Micro switch

Switch Rating : 3A/250VAC, 3A/30VDC, 0.4A/125VDC

Conduit Connection : 1/2"NPT, 3/4"NPT female, option available

Model : Recommended LT205, LXT205





LEVEL

DISPLACER LEVEL SWITCH 300 Three Stage Series

Technical Data

Easy Installation

Material : Wetted parts - SS316, SS304 available

Suitable S.G. : > 0.6

Weather Proof : IP65

Explosion Proof : CLASS I, Groups A,B,C,D; CLASS II, GROUPS E,F,G; NEMA 4X

Micro Switch rating (SPDT & 2SPDT Type) : 5A/125VAC, 3A/250VAC, 3A/30VDC,
0.4A/1/125VDC, 0.2A/250VDC

Max. Temperature : 250°C

Floater Size : Ø 60mm x 160mm length, other sizes available upon request

Model : Recommended EDW300, EDX300



TUNING FORK VIBRATING LEVEL SWITCH

Technical Data

Wetted Part Material : 316 stainless steel

Thread Connection : 1" NPT, 1" BSP

Flange Connection : from 1" to 3", JIS, ANSI, DIN, and Clamp available

Detection Length : minimum 130mm maximum 400mm

Working Temperature : -30°C ~ +80°C, Higher temp upon request

Working Pressure : maximum 100 kg/cm², up to 400kg/cm² on request

Liquid Viscosity : 0.2 ~ 10000 mpas

Liquid Density : 0.6 g/cm³ ~ 2.5 g/cm³

Housing : IP65

Explosion Proof : Class I, Groups A,B,C,D; Class II, Groups E,F,G; NEMA4X

Power Supply : 110VAC, 220VAC, 24VDC

Contact Form : SPDT

Contact Rating : 20A/125VAC, 12A/250VAC

Model : Recommended VLS500



CAPACITIVE LEVEL SWITCH

Technical Data

Housing : Aluminium Alloy, IP65, Explosion proof

Probe Insulation Material : PTFE

Rode Probe : SS316, Hastelloy C276, Ni-200, PFA lining

Working Temperature Limit : -20°C ~ +120°C

Working pressure Limit : 20 kg/cm²

Process Connection : 1" NPT of thread, or Flange

Flange Connection : 1" ~ 3", or consult to manufacturer

Operating Sensibility : 4 pf (adjustable)

Power Supply : 110VAC, 220VAC, 24VDC

Contact Form : SPDT

Contact rating : NO/NC 10A/5A 120VAC

NO/NC 7A/5A 240VAC

Measuring Length : 150mm to 4000mm

Model : Recommended CPLS1000



SIDE MOUNTED-CHAMBER TYPE LEVEL CONTROL

Technical Data

Service : Compatible liquids

Wetted Material : Body: Carbon Steel. Optional 316 SS. Floater and Trim : 303SS, 304SS, 316SS, and 430SS. Options of 316SS and 430ZSS or all 316SS

Temperature Limit : Process : 750°F (399°C). Heat fins should be used for process temperatures above 500°F (260°C) with mercury switches, 400°F (204°C) with snap switches, and 350°F (176.7°C) with hermetically sealed snap switches

Pressure Limit : 600 psig (41 bar) at 100°F (37.7°C), 500 psig (34 bar) at 750°F (399°C). Higher ratings available

Enclosure Rating : NEMA 4X, optional general purpose or explosion-proof

Repeatability : ±1/4" (6.4mm)

Switch Type : SPDT snap switch, hermetically sealed snap switch or mercury switch.

Optional DPDT or two stage

Electrical Rating : Snap switch : 12A@120VAC, 5A@240 VAC, 0.5A@125 VDC

resistive, 0.25A@250VDC resistive. Hermetically Sealed snap switch :

5A@125 VAC, 5A@240VAC, 5A@30VDC resistive. Mercury switch :

4A@120VAC/DC, 2A@240VAC/DC, Higher contact ratings available for the

Mercury switch

Electrical Connections : Screw terminal

Conduit Connection : 3/4" female NPT

Process Connections : 1" female NPT and 1" socket weld hub.

Optional flange connection

Mounting Orientation : Vertical

Set point Adjustment : ±1" (25.4mm)

Weight : 33lb (14.97 kg)

Agency Approvals : UL and CSA

Specific Gravity : 0.6 minimum



TILT SWITCH PROBE

Technical Data

Service : Powder and bulk

Temperature Limit : -40 to 150°F (-40 to 66°C)

Switch Type : SPST, normally closed

Electrical Rating : 0.25 A max, 60 V max, 3 VA max

Cable Length : 3ft (0.9m) unless otherwise specified

Probe Length : Standard 9" (23 cm); Compact : 6" (15cm)

Signal Voltage : 15 VDC

Actuation Angle : 25° from vertical

Material : Steel or 316SS

Switch Surrounding : Epoxy encapsulated

Mounting Orientation : vertical

Weight ; Standard : 4.75 lbs (2.15kg); Compact : 2.5 lbs (1.13 kg)

Features : Fittings for hangers

Enclosure Rating : NEMA 4



PNEUMATIC LIQUID LEVEL SENSOR

Technical Data

Application : Open Tanks or Vessels

Mounting : G 1 male

Pipe Coupling : Rc 1/2 female

Switch Rating : 250V 5A AC, 250V 0.25A DC (resistive)

Operating Temperature : 0°C to 70°C

Material Housing : ADC12

Material Chamber : ADC12, 304SS equivalent

Material Diaphragm : CR, FPM

Cable Entry : JIS F 20a (G3/4)

Protection : IP23 / IP55

Construction : -

Switch Operating Position : 80 ±10mm, 70 ±10mm

Switch Release Position : 60 ±15mm, 50 ±15mm

Pipe Length : 200 to 5000mm

Life Expectancy : 2 x 10⁵ Operations

Model : Recommended FP





CABLE SUSPENDED FLOAT SENSOR

Technical Data

Operating Temperature *1 : -10°C to 50°C

Maximum Pressure : 200kPa / 2 bar

Minimum S.G. : 0.7, 0.9

Cable Length : 6 meter (Max.20meter)

Life Expectancy : 1 x 10⁵ Operations

Material Cable : Ø 6.5, PVC, Ø 8.1, PVC

Material Float : PP (ABS for float cap), ABS

Material Housing : ABS

Material Flange : PVC

Material Weight : Gray iron casting (Black painting), 3kg, PVC (build in steel)

Material Rope : PE

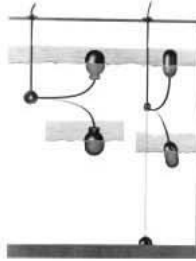
Mounting : JIS10K100A (4 holes) other upon request

Cable Entry : JIS F 20a (G3/4)

Protection : IP45

Maximum Detection Points : 6

Model : Recommended FQ



ULTRASONIC LEVEL TRANSMITTER

Technical Data

Environmental : Temp range (process) : -40°C ~ +85°C
(-40°C ~ +80°C for I.S. version)

Temp range (ambient) : -20°C ~ +65°C

IP Rating : IP 67

Performance : Digital echo processing

Input voltage range 11- 30V (17 - 28V for I.S. version), 3.5 - 22mA

Accuracy ±0.25% or 6mm (whichever is greater)

Resolution ±0.1% or 2mm (whichever is greater)

4-20mA outputs resolution 5 A (both active & passive outputs)

Temperature compensation: via internal temperature sensor

(±0.5°C accuracy)

Level and volume conversion are installed allowing linearisation for tank shapes

2-Wire I.S. version : Intrinsically safe to ATEX EEx ia IIC T4 & IECEx. NB : I.S. IMP is identified by black cap to housing instead of green. Does not include RS232 interface

Version : Remote or Integral



ELECTRODE LEVEL SENSOR

Technical Data

Max. Poles : 5

Mounting : JIS10K100A (4 holes)

Operating Temperature : -20°C to 100°C Option 150°C Max.

Maximum Pressure : 1MPa / 10bar

Material Housing : ABS or 304SS

Material Mounting : 304SS

Material Electrode : 316SS, Hastelloy B, Hastelloy C, Titanium

Material Insulation Tube : Polyolefin

Cable Entry : IP45

Model : Recommended FE



HYDROSTATIC PRESSURE LEVEL MONITOR

Technical Data

Measuring Range : 4m, 10m, 16m, 40m, 50m, 100m

Supply Power : 14 to 30V DC, 12VDC, 11 to 34V DC

Output : 4 to 20mA DC (Resistive)

Load Resistance : 500 ΩMax. , 300ΩMax. , 650ΩMax.

Operating Temperature : 0°C to 50°C

Accuracy : ±0.5% F.S. , ±x% F.S.(see below formula)

Lightning Protection : 12KV (1.2/50us)

Material Housing : ADC12

Material Body : 304SS

Material Diaphragm : hastelloy C-22, 630SS

Material Cable : PE, PVC, Hypalon

Material Flange : 304SS

Mounting : JIS5K50A or other upon request

Cable Entry : JIS F 20a (G3/4)

Protection Housing : Equivalent IP53

Protection Body : Equivalent IP58

Cable Length : 15m (100m Max.), 50m

Model : Recommended PL



CONTINUOUS PROPORTIONING CONTROLLER (VOLUME)

Technical Data

Supply Power : 100 to 240V AC ±10% 50/60Hz

Power Consumption : Approx. 20VA Max.

Output Signal : 4 to 20mA DC (resistive)

Load Resistance : 600ΩMax.

Alarm output : 4 points (2 points x 2 circuits), 240V 3A AC, 30V 3A DC (resistive)

Output Power: 24V DC

Input Signal : 4 to 20mA DC (current signal), 0 to 22kΩ (resistance signal)

Operating Temperature : -5°C to 50°C

Maximum Humidity : 85% RH

Accuracy : ±0.5% F.S.

Material : ABS

Protection : Non Drip-proof

Model : Recommended MP200



RADAR LEVEL TRANSMITTER

Technical Data

Type : VEGAPULS 68 with parabolic antenna

Measuring Range : up to 70 m

Temperature : -40 ~ +200 °C

Pressure : 3 bar

Antennas : Parabolic antenna

Swivelling Mechanism : Via mounting flange

Voltage Supply : 4 - 20 mA/HART, Profibus PA, Foundation Fieldbus

Antenna Diameter : 245 mm

Beam Angle : 4°

Process Fitting : Thread from 11", Flange from DN 50 / ANSI 2"

Type : VEGAPULS 68 with horn antenna

Measuring Range : up to 70 m

Temperature : -40 ~ +200 °C

Pressure : 40 bar

Antennas : Horn antenna

Swivelling Mechanism : Via mounting flange

Voltage Supply : 4 ~ 20 mA/HART, Profibus PA, Foundation Fieldbus

Antenna Diameter : 40 mm, 48 mm, 75 mm, 95 mm

Beam Angle : 22°, 18°, 10°, 8°

Process Fitting : Thread from 11", Flange from DN 50 / ANSI 2"

