



CERGAS PROSES SDN BHD

FLOW

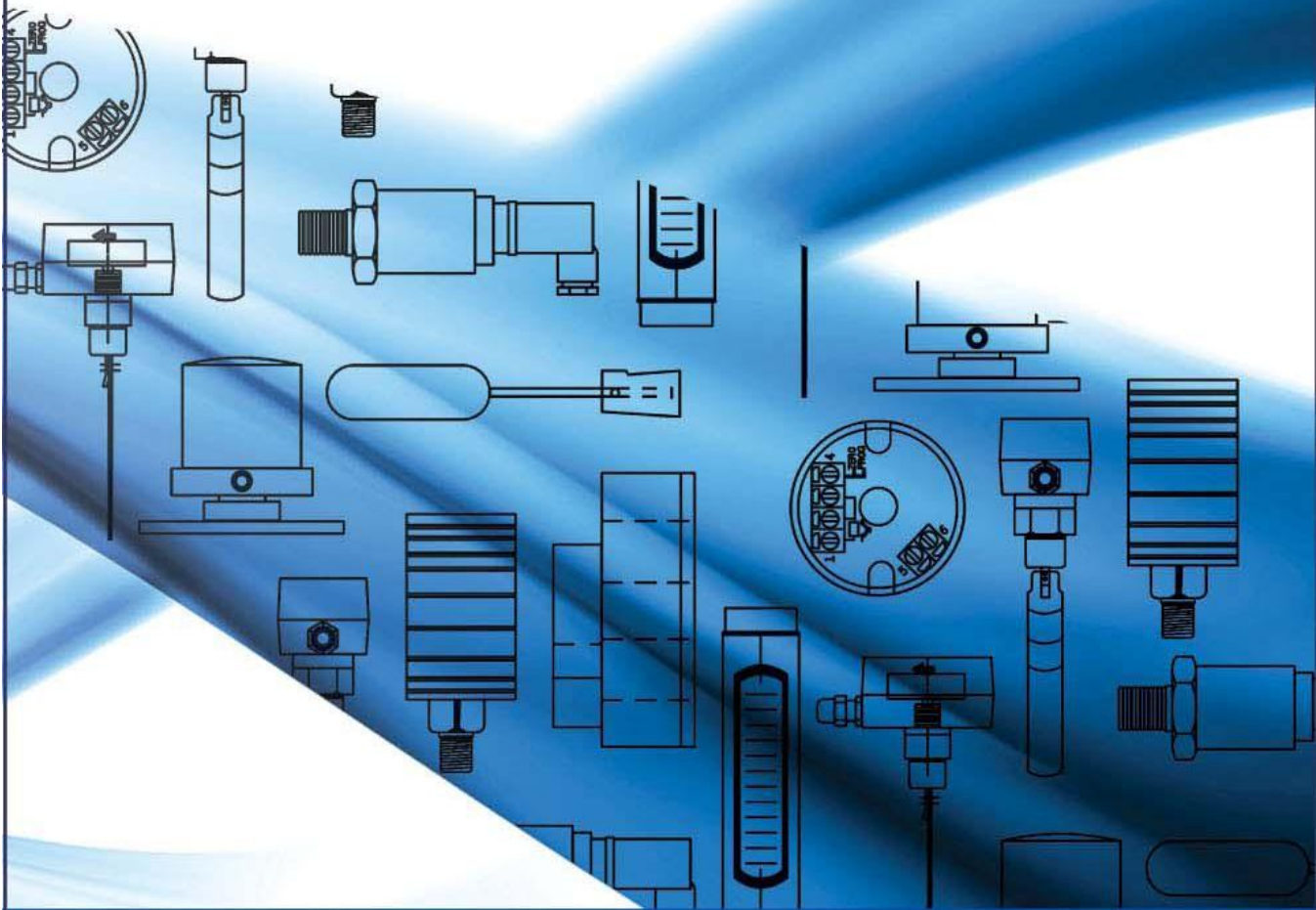
LEVEL

TEMPERATURE

PRESSURE

SYSTEM

VALVE



**Cergas Proses is the people at Cergas Proses.  
Entrusted with responsibility, they make all the difference.**

We are soles distributor for :

 **M-SYSTEM**

 **GEMU®**

 **INOX-TEK IND. CO., LTD.**

 **InterApp**

 **macnaught**

 **Baumer**

 **HACH®**

 **SEOJIN**

 **ISOIL  
INDUSTRIA**

 **GLI  
International**  
A Hach Company Brand

 **NOHKEN**

 **ELODRIVE**

 **tec sis**

 **V-TORK®**

 **NEW-FLOW**

 **NAF**

 **SHANGHAI KENT**

 **YSMETER**

Main Office

**CERGAS PROSES SDN BHD** ( Co. No: 673150 - X )

No.9, Jalan Sena 11, Taman Rinting,  
81750 Masai, Johor.

Tel : +607 295 1072 / 388 7631

Fax : +607 3878 226

Email : [lieu@cergasgroup.com](mailto:lieu@cergasgroup.com) / [sales@cergasgroup.com](mailto:sales@cergasgroup.com) / [cpsb@gmail.com](mailto:cpsb@gmail.com)

Valve Division

**VALVEPRO SDN BHD** ( Co. No: 928542 - X )

No .9-01, Jalan Sena 11, Taman Rinting,  
81750 Masai, Johor.

Tel : +607 295 1072 / 388 7631

Fax : +607 3878 226

Email : [vpsb@gmail.com](mailto:vpsb@gmail.com)

[www.cergasgroup.com](http://www.cergasgroup.com)



## SIGNAL CONDITIONAL (4-wire & 2-wire Type)

### Technical Data

**Input Version :** Fixed / Selectable/ Programmable Range

**Input Type :** mV DC, V DC, mA DC, V AC, A AC, Thermocouple, RTD, Potentiometer / Resistance, Frequency, Strain Gauge, 2-wire XMTR, Pressure

**Output :** mA DC, V DC, Frequency, Pressure

**Zero & Span Adjustment :** Front

**Power input :** AC Power or DC Power

**Isolation :** Input to output to power

**Accuracy :** as low as +/- 0.1% of span

**Mounting :** surface / DIN rail / head-mounting / rack-mounted

**Standard & Approval :** CE marking, UL Approval (HART Isolator available)



## LIMIT ALARMS

### Technical Data

**Input Version :** Fixed / Selectable / Programmable Range

**Input Type :** mV DC, V DC, mA DC, V AC, A AC, Thermocouple, RTD, Potentiometer / Resistance, Frequency, Strain Gauge

**Output :** Quad (N.O. or N.C.) / Dual(2\*SPDT) / 1\*SPDT/DPDT relay output, mA DC, V DC

**Adjustment Method :** PC Programmable, Front keypad & display, Thumbwheel, Potentiometer

**Power Input :** AC Power or DC Power

**Isolation :** Input to output to power

**Setpoint Accuracy :** as low as +/- 0.1% of F.S.

**Mounting :** surface / DIN rail / rack-mounted

**Standard & Approval :** CE marking, UL Approval



## PC RECORDER - REMOTE DATA ACQUISITION

### Technical Data

**Function :** Long, Trend, Analyze & Profile Process Signals

**I/O Type :** 8 or 16-point DC/TC Input, 8-point RTD/POT

Input, 32-point Dry Contact, 32-point Open Collector

Output, Totalized Pulse Input, 12-point Universal Input

**Power Input :** AC Power or DC Power or USB Powered

**Isolation :** Input to output to power

**Mounting :** surface or DIN rail

**MSRPAC :** up to 128 points monitored simultaneously

**High Speed Sampling :** 50ms / 8 channels



## REMOTE I/O - MULTI-CHANNEL, MIXED SIGNAL

### Technical Data

\* Great Flexibilities in number & number & type of I/O Signals

**Type :** R3 Series, R5 series, R7 series, R1 series

**Dual Redundancy :** Communication & Power Supplies

**Network Modules :** Modbus TCP (Ethernet), Modbus, DeviceNet, Profibus-DP, CC-Link, T-Link, LonWorks

**I/O :** DC Current / voltage, Temperature, Potentiometer, Totalized Pulse, AC Current / Voltage, AC Power, Discrete etc

**Base Capacity :** 2 to 16 I/O Positions

**Isolation :** 1500 VAC



## PAPERLESS RECORDER

### Technical Data

**Input Type :** Universal Input, Selectable I/O Modules

**No. of Channel :** 2, 4, 6, 8, 10 or 12 / 4-64 channels

**Memory card :** CF Card; 1 slot

**Capacity :** 128 MB through 1 GB

**Display :** 5.5 - inch TFT LCD Touch Screen

**No. of Views :** Tren, Overview, Bargraph, Retrieve, Alarm

### History

**Power Input :** AC Power or DC Power

**Interface :** Ethernet

**USB :** Conforms to Version 1.1

**Mounting :** Panel flush mounting

**Degree of Protection :** IP65 Front Panel



## DIGITAL PANEL METERS & BARGRAPH INDICATOR

### Technical Data

**Indicator :** LED, Liquid Crystal Display

**Bargraph :** 101-segment, 52-/51-segment

**Input Type :** V DC, mA DC, V AC, Thermocouple, RTD, Potentiometer /Resistance, Frequency, CT Input, VT Input 2-wire XMTR Excitation

**Front Panel :** IP66 (47 Series)

**Alarm output :** Relay 2-point, Relay 4-point,

BCD output (open collector),

RS-485 (modbus RTU), VDC, mA DC

**Power Input :** AC Power or DC Power

**Standard & Approval :** CE / ATEX / FM





## POWER TRANSDUCERS & DIGITAL MULTI POWER MONITOR

### Technical Data

**Input Type :** AC Voltage & Current, Watt, Var, Power Factor, Phase Angle & Frequency, Multi-Power

**Output :** DC Current / Voltage, Pulse, Modbus, Ao, Do selectable

**No. of Channels :** Single, Dual or Triple

**Mounting :** surface /DIN rail / Panel flush mounting

**Isolation :** 2000 VAC

**Standard & Approval :** CE marking



## PORTABLE MULTI-GAS DETECTOR

### Technical Data

#### Simple operation with pump

The durable GasAlertMax XT reliably monitors for up to four gas hazards and combines straightforward one-button field operation with an integrated sampling pump. Tamper-proof, user-adjustable options enable the instrument to be customized to suit your application. Confined space entry and remote sampling have never been so easy with new intelligent pump technology. Minimize pump blockages and improve remote sampling result accuracy. The GasAlertMax XT is fully compatible with the MicroDock II automated test and calibration system.



## LIGHTNING SURGE PROTECTORS FOR SIGNAL LINE, SENSOR, TRANSMISSION, AC/DC POWER LINE

### Technical Data

\* Absorbing surges without affecting instrumentation signal

\* Multi-Stage SPD, Loop Disconnect Fuse

\* With alarm contact output

**Indication :** LED display, Surge Counter Function

**Mounting :** surface or DIN rail

**Standard & Approval :** CE marking, UL listed, FM Intrinsically Safe, CENELEC Intrinsically Safe (ATEX)



## PROTIR 204C FTIR SPECIATED VOC FIXED CEM ANALYSER

### Technical Data

- Specifically designed for stack emissions applications
- Detects single or multiple (20+) components from low ppm to % levels
- Rugged analyser based on field proven high resolution spectrometer with zinc selenide optics and DTGS detector
- Real time display and trending of component concentrations
- Uses pre-set analysis model integrated into powerful control and measurement software
- Single or multipoint sampling systems – custom designed for each application
- Data easily exported to MS Excel or similar spreadsheets
- Connection to plant DCS and SCADA systems
- Alarm Management options available
- Programmable Dilution Set up



## ELECTRONIC ACTUATORS & POSITION SENSORS

### Technical Data

**Rotary motion type actuator -** Mini-Top MRP4 / MRP5 / MRP6

**Linear motion type actuator -** Mini-Top MSP4 /MSP5 /MSP 6

Servo Top II PSN Series

**Motor :** Stepping Motor, AC Motor

**Input :** 4-20 mA DC, 1-5 VDC / angle -22.5° ~ + 22.5°, -45° ~ + 45°

**Resolution :** 1/1000 is possible by digital control (Mini Top)

**Thrust :** 700-2500N (MSP), 5-33N-m (MRP), 3000 -5000N (PSN)

**Power Input :** AC Power or DC Power



## GAS DETECTOR CONTROL PANEL / CONTROLLER

### Technical Data

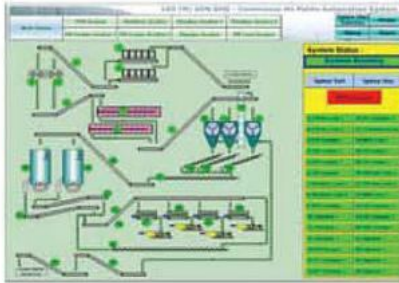
- Wall mounting or 19" Rack Versions
- 24V DC or 110/230VAC operation
- 24V Independent Audio/Visual Alarm driver
- Volt free contact outputs
- Digital display showing gas concentration
- Serially addressable detector options
- Battery backup options
- Optional additional input/output cards
- Easy installation
- Modbus Output Option





# SYSTEM

## CONTINUOUS SCADA CONTROL SYSTEM



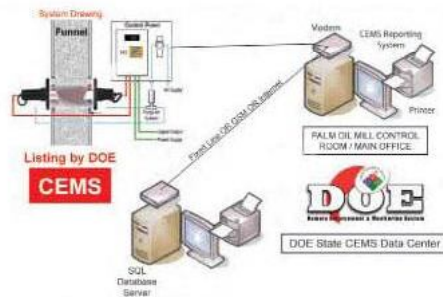
## BOILER CONTROL SYSTEMS



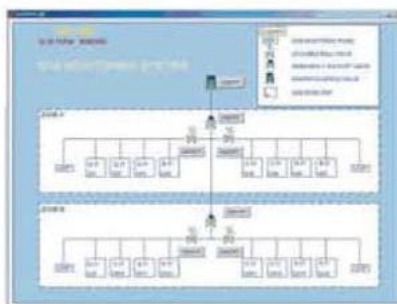
## TUNNER SCADA CONTROL SYSTEM



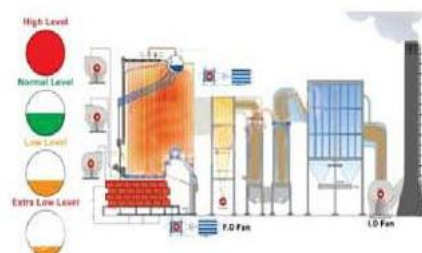
## CONTINUOUS EMISSION MONITORING SYSTEM



## MULTI CHANNEL GAS DETECTION SYSTEM



## TOTAL BOILER CONTROL SYSTEM





## ON LINE GAS DETECTORS SENSOR

### Technical Data

#### 4-20mA Device 2 and 3 Wire

- Addressable Versions
- Compact Size
- Exd Certified
- ATEX Certified
- Ingress Protection IP66
- Stainless Steel Housing

#### Available as:

- 2 Wire Toxic Gas Detector
- 2 Wire Oxygen Sensor
- 3 Wire 'Pellistor' Flammable Gas Detector.
- 3 Wire 'Infra Red' Flammable Gas Detector
- 3 Wire 'Infra Red' CO2 Gas Detector



## SEWAGE TREATMENT PLANT INSTRUMENT CONTROL

### Technical Data

We are supplying and install open channel flow monitoring, Dissolved oxygen system, gas detection system, valve control and PLC and Scada, telemetry and etc. our equipment obtain the SPAN approval and we are involving turnkey project for Indah water Konsotium.



## BIOGAS PLANT INSTRUMENT CONTROL AND VALVE CONTROL

### Technical Data

We are supplying and install the gas flowmeter, Pressure and temperature control equipment, PLC and Scada system and control valve to Biogas plant contractor. We are also involve in after sales services and commissioning and testing for the Instrument and valve.



## WASTE WATER AND WATER TREATMENT INSTRUMENT CONTROL AND VALVE

### Technical Data

We are supplying and install, PH system, level control, flow system, COD, BOD analyzer, silica and sodium analyzer conductivity system and etc.



## PLC AND SCADA CONTROL SYSTEMS

### Technical Data

- Including automation, pharmaceutical, packaging equipment, special purpose machines & the process industry.
- Industrial control system design, manufacture & installation.
- PLC Control System integrators for Mitsubishi, Omron, Siemens etc.
- Human Machine Interfaces (HMI's) selection, programming and support.
- PLC control systems and control panel design.
- Control panel design & electrical drawings generated on AutoCAD.
- Industrial control systems utilising Mitsubishi PLC's, Omron PLC's etc.
- Programmable Logic Controller (PLC) programming service.



## LPMS - 9000 PLANT WIDE AUTOMATION

### Technical Data

